

Our God

Words and Music by
Matt Redman, Jonas Myrin,
Chris Tomlin and Jesse Reeves

♩=105

INTRO

Am/C

F/C

C



4 G^{sus}/C

Am/C

F/C



VERSE 1

7 C

G^{sus}/C

Am/C

F/C



1. Wa - ter You turned _ in - to wine, .

10 C

Am/C

F/C

C

Dm⁷



o-pened the eyes _ of the blind; _ There's no one like You, _

VERSE 2

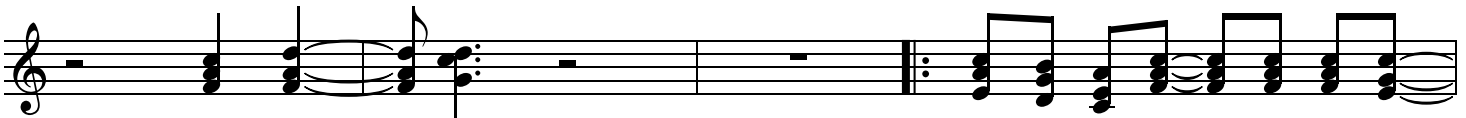
14

G^{sus}

G

Am

F



none like ____ You.

2. In - to the dark - ness You shine, .

18 C Am F C Dm⁷

— out of the ash - es, we rise; — There's no one like You, _

22 G^{sus} G Am

CHORUS 1

none like ____ You. Our God is great - er,

26 F C G^{sus}

our God is strong - er; God, You are high - er than an - y oth - er.

29 Am F C

Our God is heal - er, awe - some in pow - er, our - God, _ our - God. .

32 G^{sus} Am F C G^{sus} G^{sus} D.S.

1. INSTRUMENTAL

2. G^{sus}

38 G^{sus} Am F C

3. INSTRUMENTAL

42 G^{sus} Am F

BRIDGE 1

45 C G^{sus} Am

And if our God is for us

48 F C G^{sus}

then who could ev - er stop us, and if our God is with us then what could stand a - gainst? .

51 Am F C

— And if our God is for us then who could ev - er stop us, and if our God is with us

54 G^{sus} Am F C/E

then what could stand a - gainst? —

58 G^{sus} Am F C/E G^{sus}

What could stand a - gainst? —

CHORUS 2

63 Am¹¹ F² C

Our God is great - er, our God is strong - er; God, You are high - er than an -

66 G/B Am¹¹ F²

- y oth - er. Our God is heal - er, awe - some in pow - er, our — God, .

BRIDGE 2

69 C G^{sus} Am¹¹

our God. And if our God is for us

72 F² C G/B

then who could ev - er stop us, and if our God is with us then what could stand a - gainst? .

75 Am¹¹ F² C

And if our God is for us then who could ev - er stop us, and if our God is with us

78 G^{sus} Am F C/E

then what could stand a - gainst? —

82 G^{sus} Am F C/E G^{sus} 2

Then what could stand a - gainst? —

CHORUS 2

88 Am¹¹ F² C

Our God is great - er, our God is strong - er; God, You are high - er than an -

91 G/B Am¹¹

- y oth - er. Our God is heal - er,

93 F²

awe-some in pow - er, our God, our God.