

Whom Shall I Fear God Of Angel Armies

Words and Music by
Chris Tomlin, Ed Cash
and Scott Cash

♩=75 **VERSE 1**

G

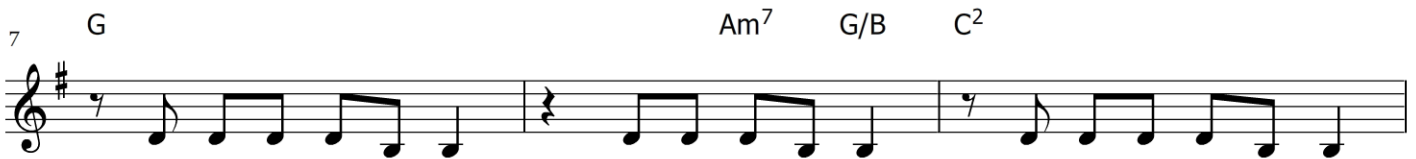
Am⁷ G/B C²



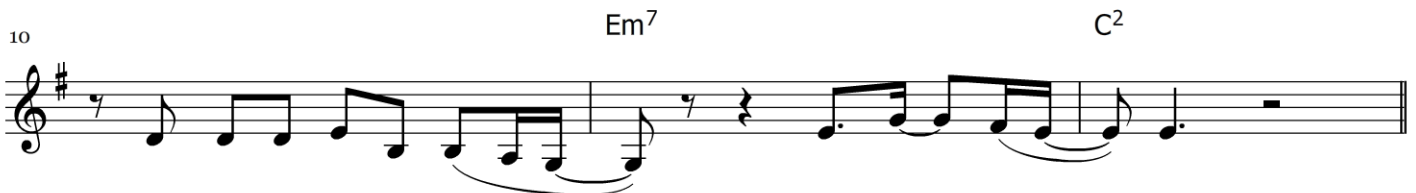
1. You hear me when I call. You are my morn-ing song. Though dark-ness fills the night,



it can-not hide the light. _____ Whom shall I _____ fear?



You crush the en - e - my un - der-neath my feet. You are my sword and shield,



though trou-bles lin - ger still. _____ Whom shall I _____ fear?

⌘ **CHORUS 1a**



I know Who goes be-fore me, I know Who stands be-hind: The God of an - gel ar-mies



is al-ways by my side! The One Who reigns for - ev - er, He is a friend of mine.

19 Em⁷ C² 2nd time to Coda ⊕ D G

The God of an - gel ar - mies is al - ways by my side!

VERSE 2

23 G C²

2. My strength is in Your name, for You a - lone can save. You will de - liv - er me.

26 Em⁷

Yours is the vic - to - ry. _____ Whom shall I _____

28 C² Em⁷ C² D D.S. al Coda

_____ fear? Whom shall I _____ fear? _____

⊕ Coda

BRIDGE

31 G C² G D

side! And noth - ing formed a - gainst me shall stand! _____

34 G C² G

You hold the whole world in Your hands. _____ I'm hold - ing on to Your

37 Em⁷ D C² 1. D

prom - is - es; _____ You are faith - ful, _____ You are faith - ful. _____

40 ^{2.} D Em⁷ D/F#

faith - ful, ___ You are faith - ful. _____

43 CHORUS 1b Em⁷ D G Em⁷ D G Em⁷ C²

I know Who goes be-fore me, I know Who stands be-hind: The God of an - gel ar-mies

46 D G Em⁷ D/F# G Em⁷ D G

is al-ways by my side! The One Who reigns for - ev - er, He is a friend of mine.

49 Em⁷ C² CHORUS 1c G

The God of an - gel ar-mies is al-ways by my side! I know Who goes be-fore me, _

52 D/F# Em⁷ C²

I know Who stands be-hind: The God of an - gel ar-mies is al-ways by my side!

55 G D/F# Em⁷

The One Who reigns for - ev - er, ___ He is a friend of mine. The God of an - gel ar-mies

58 C² Em⁷ C² G

is al-ways by my side! The God of an - gel ar-mies is al-ways by my side!