

# I Will Rise

Words and Music by  
Louie Giglio, Chris Tomlin,  
Jesse Reeves and Matt Maher

♩=82

## VERSE 1

F#m<sup>9</sup> D A



1. There's a peace I've come \_ to know, \_ though my heart \_ and flesh \_ may fail. \_



4 \_ There's an an - chor for \_ my soul - \_ I can say, \_ "It is \_ well." \_

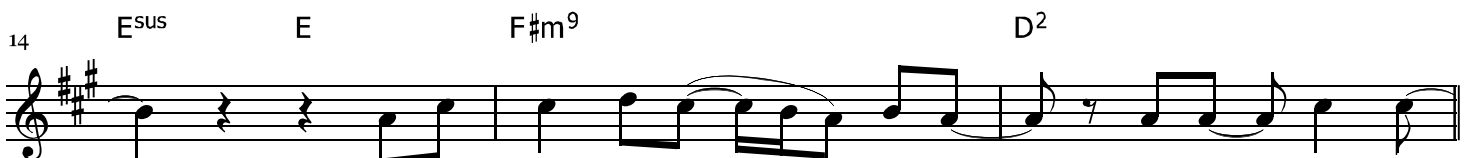
## PRE-CHORUS



8 \_ Je - sus has o - ver-come, \_ and the grave \_



11 \_ is o - verwhelmed; \_ The vic - to - ry \_ is won, \_



14 \_ He is ris - en from \_ the dead. \_ And I \_ will rise \_

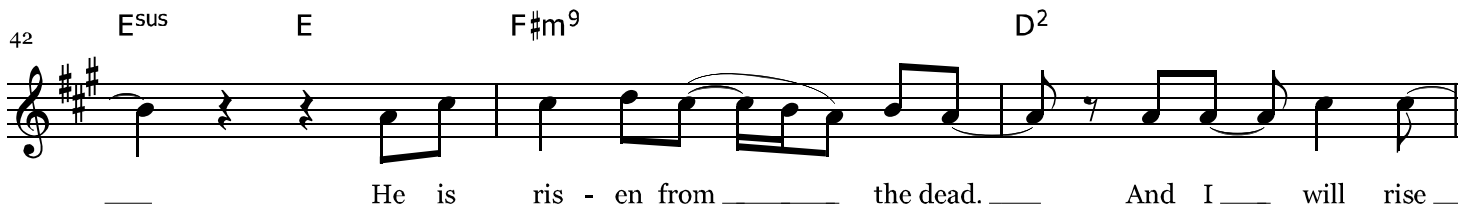
## CHORUS



17 \_ when He calls \_ my name; \_ No \_ more sor - row, \_ no \_



42  $E^{sus}$  E  $F\#m^9$   $D^2$



He is ris - en from the dead. And I will rise

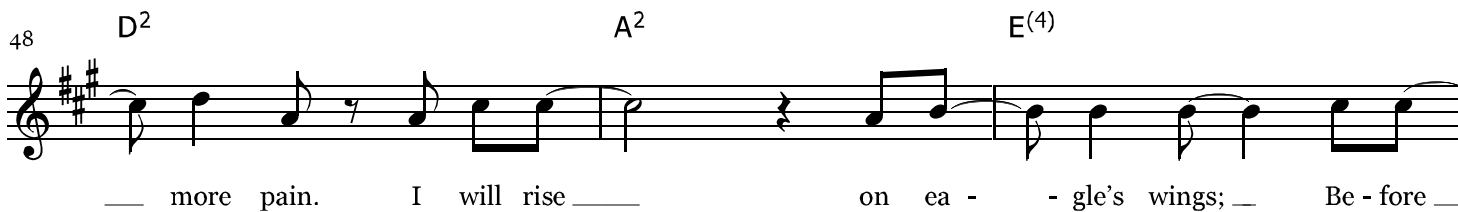
**CHORUS**

45  $A^2$   $E^{(4)}$   $F\#m^9$



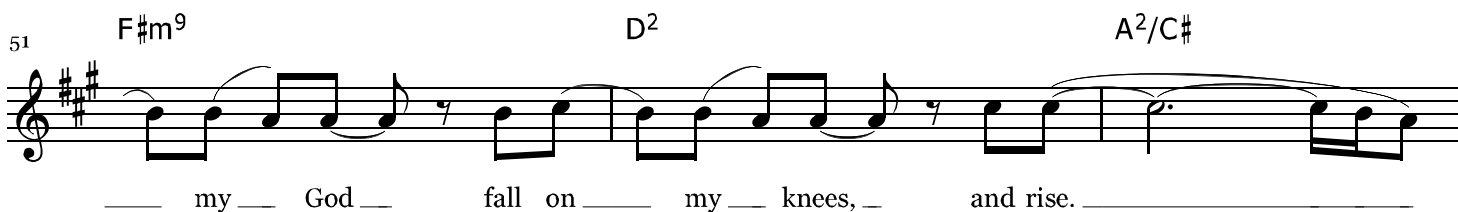
when He calls my name; No more sor - row, no

48  $D^2$   $A^2$   $E^{(4)}$



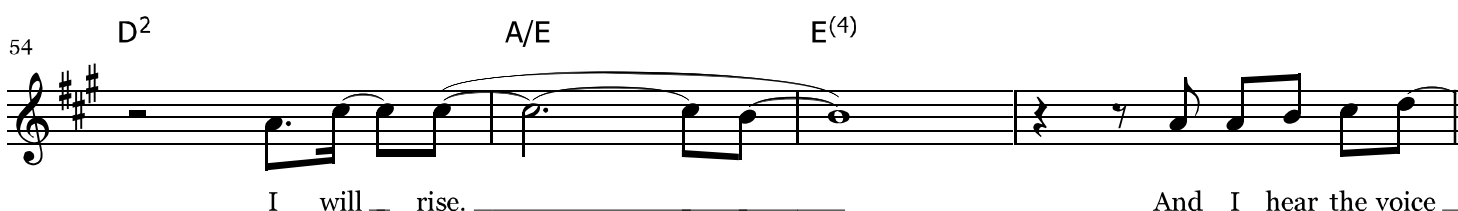
more pain. I will rise on ea - - gle's wings; Be - fore

51  $F\#m^9$   $D^2$   $A^2/C\#$



my God fall on my knees, and rise.

54  $D^2$   $A/E$   $E^{(4)}$



I will rise. And I hear the voice

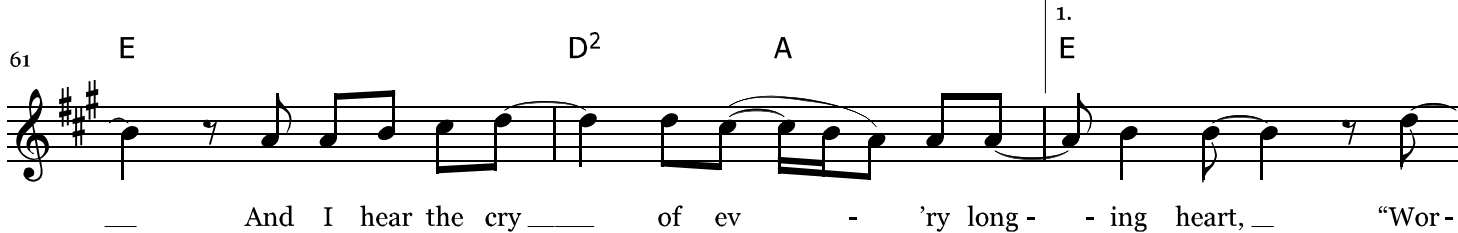
**BRIDGE**

58  $D^2$  A E  $D^2$  A



of man - y an - - gels sing, "Wor - - thy is the Lamb!"

61 E  $D^2$  A



And I hear the cry of ev - 'ry long - - ing heart, "Wor -

1.  
E

64  $D^2$  A E 2.  
E  $F\#m^7$

- thy is \_\_\_\_\_ the Lamb!" And I hear the voice - ing heart, - "Wor-

67  $D^2$  A E  $D^2$  A E

- thy is \_\_\_\_\_ the Lamb, \_\_\_\_\_ wor- - thy is \_\_\_\_\_ the Lamb!"

**INSTRUMENTAL**

71  $A^2$   $E^{(4)}$   $F\#m^7$   $D^2$

I will \_ rise \_

**CHORUS**

76  $A^2$   $E^{(4)}$   $F\#m^9$

\_\_\_\_\_ when He calls \_\_\_\_\_ my name; \_\_\_\_\_ No \_\_\_\_\_ more sor - row, \_\_\_\_\_ no \_\_\_\_\_

79  $D^2$   $A^2$   $E^{(4)}$

\_\_\_\_\_ more pain. I will rise \_\_\_\_\_ on ea - - gle's wings; \_\_\_\_\_ Be - fore \_\_\_\_\_

82  $F\#m^9$   $D^2$   $A^2/C\#$

\_\_\_\_\_ my \_\_\_\_\_ God \_\_\_\_\_ fall on \_\_\_\_\_ my \_\_\_\_\_ knees, \_\_\_\_\_ and rise. \_\_\_\_\_

85  $D^2$   $A/E$   $D^2/F\#$

I will \_ rise. \_\_\_\_\_ I will \_ rise! \_\_\_\_\_

ENDING

88

A/E

E<sup>(4)</sup>

A

Musical notation for the ending of the piece. It features a treble clef and a key signature of two sharps (F# and C#). The melody consists of a half note G4, followed by a quarter note F#4, a quarter note E4, and a half note D4. A slur covers the first four notes. The piece concludes with a whole note A4. A horizontal line is drawn below the staff.