

# Glory To God Forever

Words and Music by  
Steve Fee and Vicky Beeching

♩ = 80 VERSE

G/B

C<sup>2</sup>(no3)

G

D<sup>sus</sup>



1. Be - fore the world was \_ made, be - fore You spoke it to be,  
2. Cre - a - tor, God, You \_ gave me breath, so I \_ could praise



G/B

C<sup>2</sup>(no3)

G

D<sup>sus</sup>

You were the King of \_ kings— yeah, You were, yeah You were!  
Your great and match - less \_ name all my days, all my days!



G/B

C<sup>2</sup>(no3)

G

D<sup>sus</sup>

G/B

C<sup>2</sup>(no3)

And now, You're reign-ing \_ still, en-throned a-bove all \_ things; An-gels and saints cry \_ out,  
So, let my whole life \_ be a blaz-ing of - fer - ing— a life that shouts and \_ sings

CHORUS



G

D<sup>sus</sup>

Cmaj<sup>9</sup>

G

D<sup>sus</sup>

Em<sup>7</sup>

we join them as we sing: \_ Glo - ry to God, \_ glo - ry to \_ God, \_  
the great-ness of our King! \_



Cmaj<sup>9</sup>

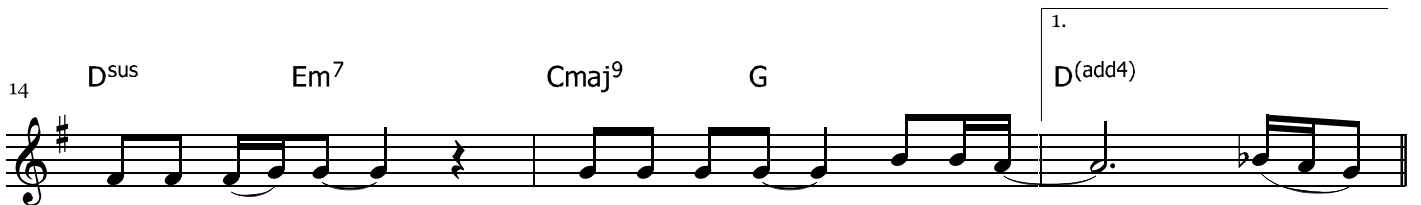
G

D(add4)

Cmaj<sup>9</sup>

G

glo - ry to God \_ for - ev - er! \_ Glo - ry to God, \_



D<sup>sus</sup>

Em<sup>7</sup>

Cmaj<sup>9</sup>

G

D(add4)

glo - ry to \_ God, \_ glo - ry to God \_ for - ev - er! \_ Yeah. \_

**INSTRUMENTAL**

17 C<sup>2</sup>(no3) G D Em<sup>7</sup> C<sup>2</sup>(no3) G D

Musical notation for instrumental section 17-20, featuring a treble clef, a key signature of one sharp (F#), and a 4/4 time signature. The melody consists of eighth and quarter notes, with some beamed eighth notes. The piece ends with a double bar line and repeat dots.

2. **BRIDGE**

21 D(add4) C G D<sup>sus</sup> Em<sup>7</sup>

Musical notation for bridge section 21-23, featuring a treble clef, a key signature of one sharp (F#), and a 4/4 time signature. The melody starts with a dotted quarter note followed by a quarter rest, then continues with eighth and quarter notes. The piece ends with a double bar line and repeat dots.

Take my life, and let it be all for You, and for Your glo - ry;

24 C G D<sup>sus</sup> C G

Musical notation for bridge section 24-26, featuring a treble clef, a key signature of one sharp (F#), and a 4/4 time signature. The melody consists of eighth and quarter notes. The piece ends with a double bar line and repeat dots.

take my life and let it be Yours. \_\_\_\_\_ Take my life, and let it be

27 D<sup>sus</sup> Em<sup>7</sup> C G D<sup>sus</sup>

Musical notation for bridge section 27-29, featuring a treble clef, a key signature of one sharp (F#), and a 4/4 time signature. The melody consists of eighth and quarter notes. The piece ends with a double bar line and repeat dots.

all for You, and for Your glo - ry; Take my life and let it be Yours. \_\_\_\_\_ We sing:

**CHORUS**

30 Cmaj<sup>9</sup> G D<sup>sus</sup> Em<sup>7</sup> Cmaj<sup>9</sup> G

Musical notation for chorus section 30-32, featuring a treble clef, a key signature of one sharp (F#), and a 4/4 time signature. The melody consists of eighth and quarter notes. The piece ends with a double bar line and repeat dots.

Glo - ry to God, \_\_\_\_\_ glo - ry to \_\_\_\_\_ God, \_\_\_\_\_ glo - ry to God \_\_\_\_\_ for - ev - er! \_\_\_\_\_

33 D(add4) Cmaj<sup>9</sup> G D<sup>sus</sup> Em<sup>7</sup>

Musical notation for chorus section 33-35, featuring a treble clef, a key signature of one sharp (F#), and a 4/4 time signature. The melody consists of eighth and quarter notes. The piece ends with a double bar line and repeat dots.

\_\_\_\_\_ Glo - ry to God, \_\_\_\_\_ glo - ry to \_\_\_\_\_ God, \_\_\_\_\_

36 Cmaj<sup>9</sup> G D(add4)

Musical notation for chorus section 36-38, featuring a treble clef, a key signature of one sharp (F#), and a 4/4 time signature. The melody consists of eighth and quarter notes. The piece ends with a double bar line and repeat dots.

glo - ry to God \_\_\_\_\_ fo - ev - er! \_\_\_\_\_ We sing!

38 <sup>2.</sup> D(add4) <sup>3.</sup> D(add4) C<sup>2</sup>(no3) G D Em<sup>7</sup>

D.S.

Yeah. \_\_\_\_

42 C<sup>2</sup>(no3) G D C<sup>2</sup>(no3) G

45 D Em<sup>7</sup> C<sup>2</sup>(no3) G D G