

This Is Amazing Grace

Words and Music by
Phil Wickham, Jeremy Riddle
and Josh Farro

♩=100 **VERSE 1**

G

C²(no3)

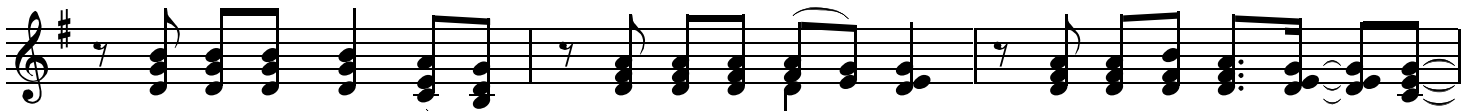


1. Who breaks the pow - er of sin and dark - ness, whose love is might - y —

4

Em

D



and so much strong - er? — The King of glo - ry, the King a - bove all — kings. —

VERSE 2

G



2. Who shakes the whole earth with ho - ly thun - der

11

C²(no3)

Em



and leaves us breath - less in awe and won - der? — The King of glo - ry,

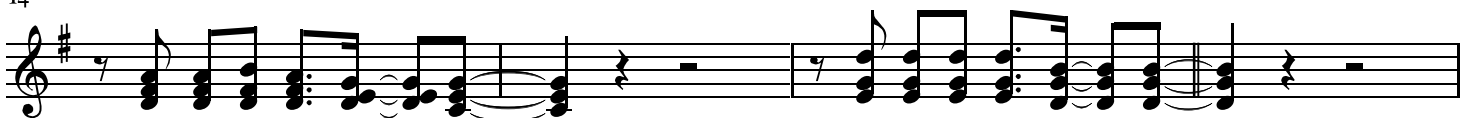
⌘ **CHORUS**

14

D

C²(no3)

G



the King a - bove all — kings. — This is a - maz - ing — grace, —

18

C



this is un - fail - ing — love, — that You would take my — place, —

21 Em D

— that You would bear my — cross. — You — laid down Your — life —

25 G C

— that I would be — set free. — Oh, —

29 Em D N.C. G

2nd time to Coda ⊕

INSTRUMENTAL

Je-sus, I sing — for all that You've done for — me.

32 C²(no3)

VERSE 3

35 G C²(no3)

3. Who brings our cha - os back in - to ord - er, who makes the or - phan —

38 Em D

a son and daugh - ter? — The King of glo - ry, the King of glo - ry.

VERSE 4

41 G C²(no3)

4. Who rules the na - tions with truth and jus - tice, — shines like the sun in —

44 Em

all of its bril - liance? ___ The King of glo - ry,

46 D.S. al Coda

D C2(no3)

the King a - bove all ___ kings. ___ Yeah, ___ this is a - maz - ing ___ grace,

49 BRIDGE

⊕ Coda D G G

all that You've done _ for me. ___ Wor - thy is the Lamb who was slain!

53 C2(no3)

___ Wor - thy is the King ___ who con - - quered the grave! ___

56 C2(no3)

G

Wor - thy is the Lamb who was slain! ___ Wor - thy is the King ___ who con -

59 G

- quered the grave! ___ Wor - thy is the Lamb who was slain! ___

62 Em

C2(no3)

Wor - thy is the King ___ who con - - quered the grave! ___ Wor - thy is the Lamb who was slain! _

65 G C²(no3)

Wor - thy, wor - thy, wor - thy! Oh, this is a - maz - ing grace, -

CHORUS

68 G C

this is un - fail - ing love, _____

71 Em D

that You would take my place, _____ that You would bear my cross. _____

75 G

You laid down Your life _____ that I would be set

78 C Em

free. _____ Oh, Je - sus, I sing for

ENDING

81 D G C²(no3)

all that You've done for me, _____

85 G

all that You've done for me. _____

87

C²(no3)

G

The musical notation consists of a single staff with a treble clef and a key signature of one sharp (F#). Measure 87 contains a series of chords: a whole chord, a half note chord, a quarter note chord, a quarter note chord, and a quarter note chord. A slur covers the first five notes. Measure 88 contains a whole rest. Measure 89 contains a quarter note chord, a quarter note chord, and a quarter note chord. Measure 90 contains a whole note chord. The piece ends with a double bar line.