

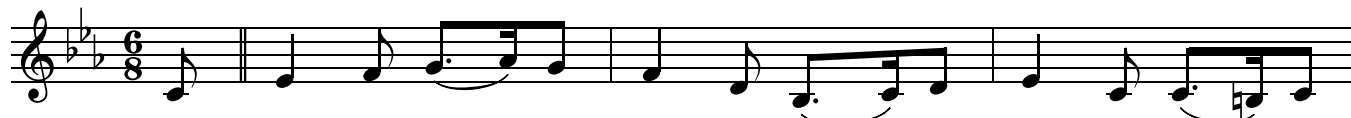
# What Child Is This

Words by  
William Chatterton Dix

Music  
Traditional English Folk Melody  
"Greensleeves"

**VERSE**

Cm B $\flat$ /D E $\flat$  B $\flat$  Cm Fm/A $\flat$



1. What Child is this, \_ who laid to rest, \_ on Mar - ys lap \_ is  
2. Why lies He in \_ such mean es - tate \_ where ox and ass \_ are  
3. So bring Him in - cense, gold and myrrh; \_ Come, peas - ant, king, \_ to

4 G Cm B $\flat$ /D E $\flat$  B $\flat$  Cm Fm G



sleep - ing? Whom an - gels greet \_ with an - thems sweet, \_ while shep - herds watch \_ are  
feed - ing? Good Chris - tian, fear \_ for sin - ners here, \_ the si - lent Word \_ is  
own \_ Him. The King of kings \_ sal - va - tion brings; \_ Let lov - ing hearts \_ en -

8 C<sup>sus</sup> Cm Gm E $\flat$  B $\flat$  Cm Fm/A $\flat$



keep - ing? This, this \_ is Christ the King, \_ whom shep - herds guard \_ and  
plead - ing. Nails, spear \_ shall pierce Him through, \_ the cross be borne \_ for  
-throne Him. Raise, raise \_ the song on high; \_ The Vir - gin sings \_ her

12 G Gm E $\flat$  B $\flat$  Cm Fm G C<sup>sus</sup> Cm



an - gels sing. Haste, haste \_ to bring Him laud, \_ the Babe, \_ the Son \_ of Mar - y.  
me, for you. Hail, hail \_ the Word made flesh, \_ the Babe, \_ the Son \_ of Mar - y.  
lull - a - by. Joy, joy \_ for Christ is born, \_ the Babe, \_ the Son \_ of Mar - y.