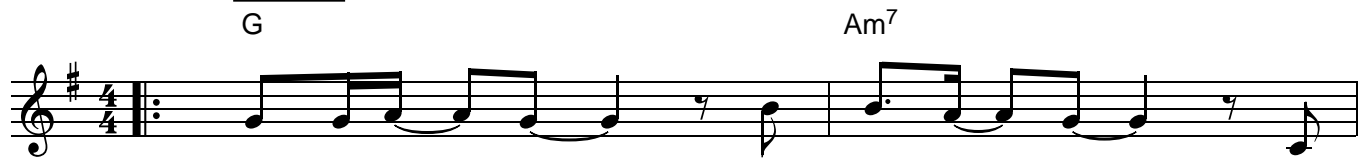


Jesus Messiah

Words and Music by
Daniel Carson, Chris Tomlin,
Ed Cash and Jesse Reeves

♩=86

VERSE



1. He be - came _ sin, _ who knew no _ sin; _ that
(2.) bod - y the _ bread, _ His blood the _ wine _ bro -

3

G/B

C²(no3)

G



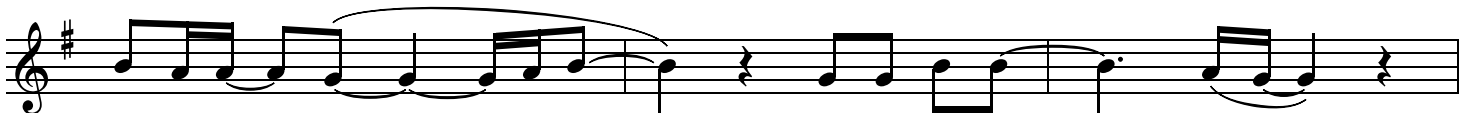
we might be - come _ His right - eous - ness; _ He hum - bled Him - self, _ and
-ken and poured out, _ all for _ love. _ The whole earth trem - bled, _ and

6

Am⁷

G/D

C²(no3)



car - ried the _ cross. _ Love so a - maz - ing, _
the veil was _ torn. _ Love so a - maz - ing, _

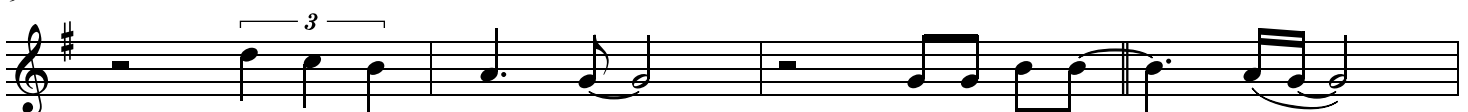
9

G/D

C²(no3)

CHORUS

G

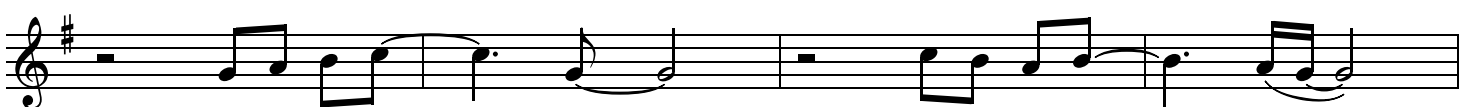


Love so a - maz - ing. _ Je - sus, Mes - si - ah; _
Love so a - maz - ing. _

13

C²(no3)

G



Name a - bove all _ names; _ Bless - ed Re - deem - er; _

17 D^{sus} G

Em-man - u - el. The Res-cue for sin - ners,

21 C²(no3) G/B

the Ran-som from heav - en; Je - sus, Mes - si - ah,

25 D^{sus} G Last time to Coda \oplus 1. 2.

Lord of all. 2. His All our hope -

BRIDGE

29 Am¹¹ G/B C²(no3) D^{sus}

_____ is in You, all our hope _____ is in You; all the glo-

33 Am¹¹ G/B

- ry to You, God,

35 C²(no3) D^{sus} D.S. al Coda


the Light of the world. Je - sus, Mes - si -

\oplus Coda **ENDING**

38 G/E G/D D^{sus} C²(no3) D⁷/C

Je - sus, Mes - si - ah, Lord of all.


42 C² C²(no3) D⁷/C



The Lord ____ of all! _____

Detailed description: This musical staff is in treble clef with a key signature of one sharp (F#). It begins with a common time signature 'C'. The first measure contains a whole rest. The second measure contains a quarter note G4 with a fermata. The third measure contains a quarter note A4 with a fermata. The fourth measure contains a quarter note B4 with a fermata. The fifth measure contains a half note C5 with a fermata. The sixth measure contains a half note D5 with a fermata. The seventh measure contains a half note E5 with a fermata. The eighth measure contains a half note F#5 with a fermata. The lyrics 'The Lord ____ of all! _____' are aligned with the notes.

44 C² D⁷/C C²(no3) G



The Lord _ of all. _____

Detailed description: This musical staff is in treble clef with a key signature of one sharp (F#). It begins with a common time signature 'C'. The first measure contains a whole rest. The second measure contains a quarter note G4 with a fermata. The third measure contains a quarter note A4 with a fermata. The fourth measure contains a quarter note B4 with a fermata. The fifth measure contains a half note C5 with a fermata. The sixth measure contains a half note D5 with a fermata. The seventh measure contains a half note E5 with a fermata. The eighth measure contains a half note F#5 with a fermata. The lyrics 'The Lord _ of all. _____' are aligned with the notes.